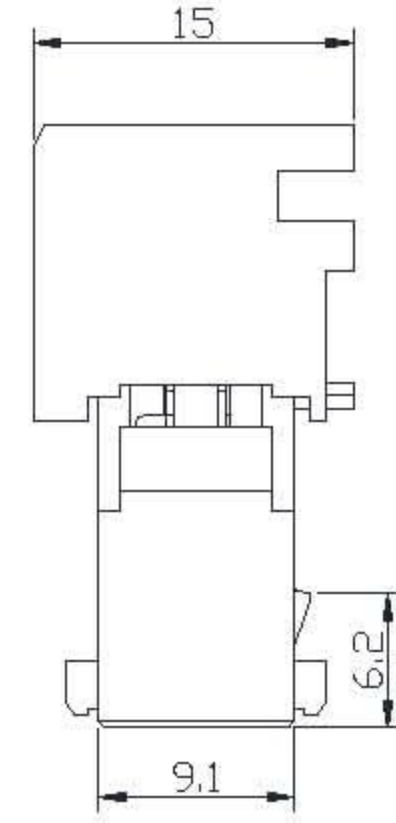
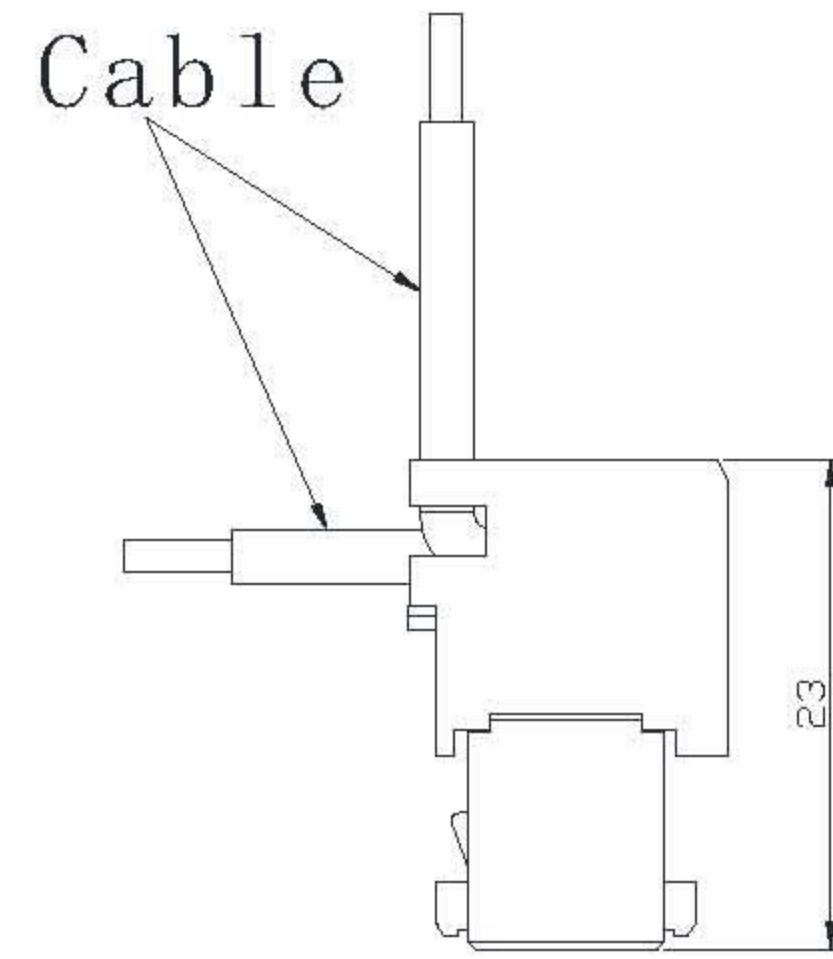
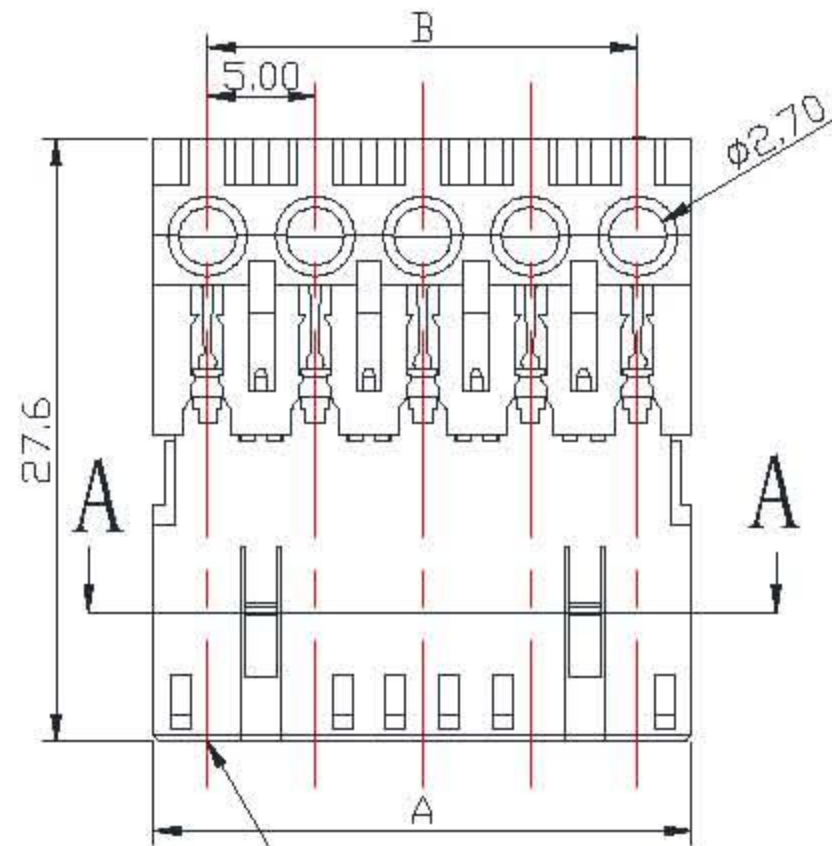
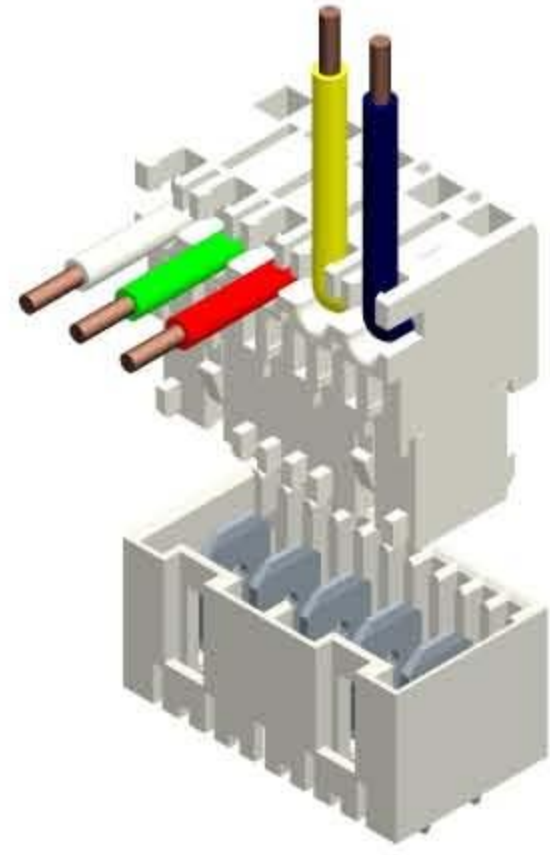


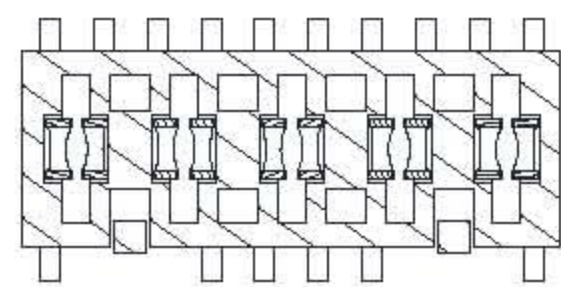
M5005

SPECIFICATION

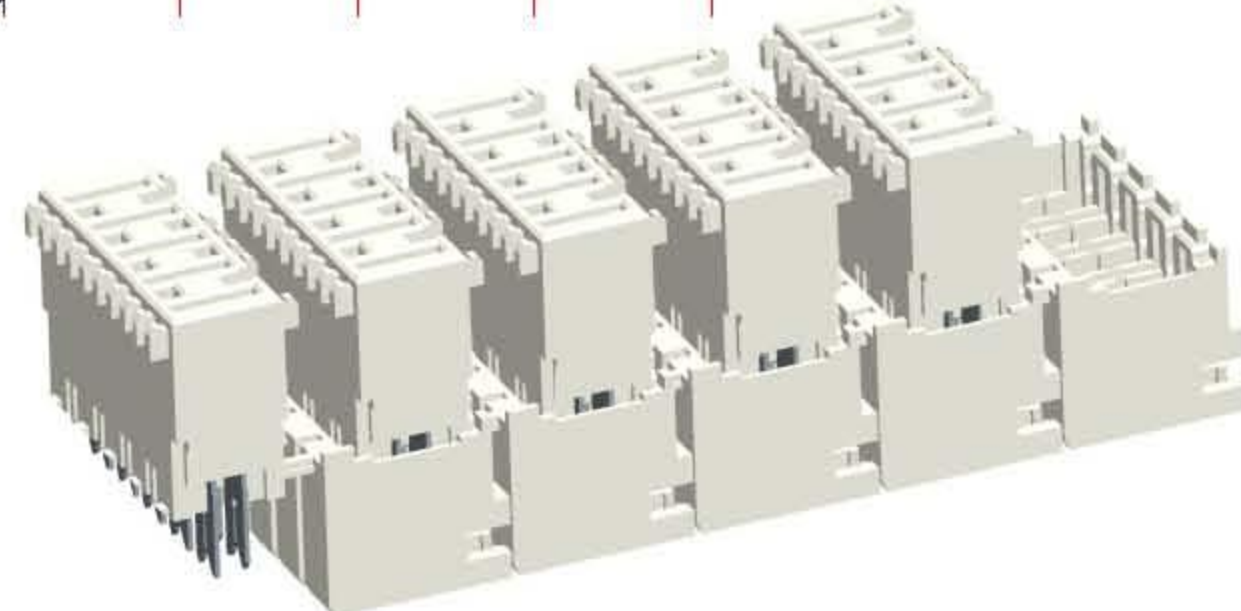
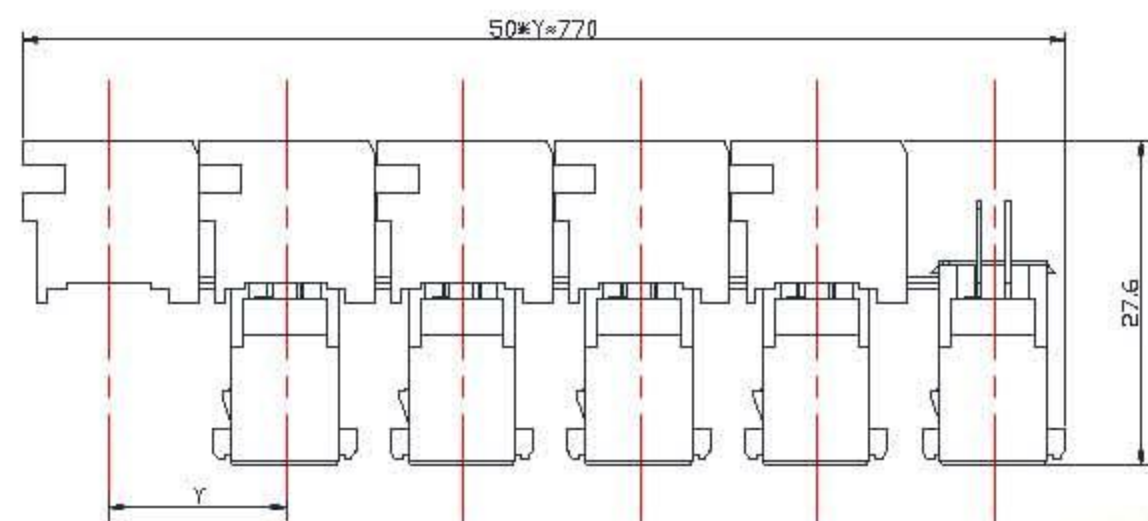
Current rating: AWG 20# 7AAC, DC
 AWG 18# 10AAC, DC
 Voltage rating: 250V AC, DC
 Operating Temperature: -40°C--+120°C
 Contact Resistance: 10mΩ max.
 Insulation resistance: 1000MΩ min.
 Withstanding voltage: 2800V AC/minute
 Material: Housing: Nylon66 UL94V-0
 Terminal: Phosphor bronze, Tin-plated
 silver-plated or selective gold-plated
 Wire range: AWG 20 to 18
 Insulation diameter: 2.5mm Max.
 GWT: 750°C IEC-60335-1



Position 1



SECTION: A-A



Circuits	Dimensions	
	Dim:A	Dim:B
2	10.00	5.00
3	15.00	10.00
4	20.00	15.00
5	25.00	20.00
6	30.00	25.00
7	35.00	30.00
8	40.00	35.00
9	45.00	40.00
10	50.00	45.00
11	55.00	50.00
12	60.00	55.00

M5005 Part Number Definition

M5005-X-X-XXX-XX-X

